

SCOM 2012 Maintenance Mode Scheduler

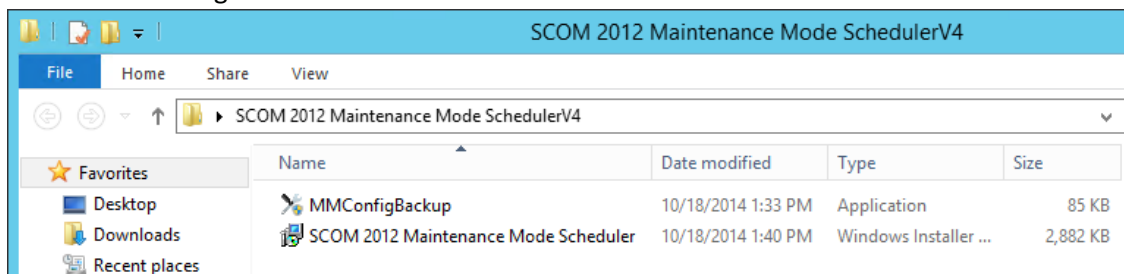
V4 Upgrade Guide

User Requirements: Users require Internet Explorer 9 or above, Google Chrome or Mozilla Firefox.

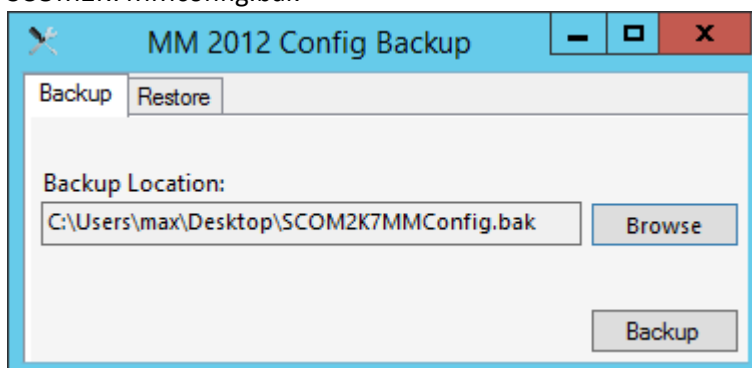
****Important**** You will need to run the [MMConfigBackup.exe](#) tool **first** before installing SCOM 2012 Maintenance Mode Scheduler.msi or you will have to manually reconfigure everything.

Instructions

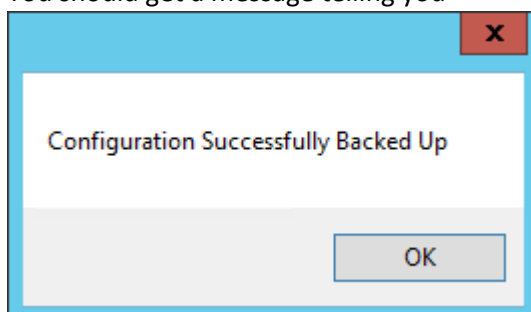
- 1.) Copy the V4 **SCOM 2012 Maintenance Mode Scheduler.msi** and the **MMConfigBackup.exe** files from the zip file over to the Management Server.



- 2.) Right click on **MMConfigBackup.exe** and choose **Run as Administrator**
- 3.) Click **Browse** and **Choose a Backup Location** and a file name for your current configuration. I choose SCOM2K7MMconfig.bak

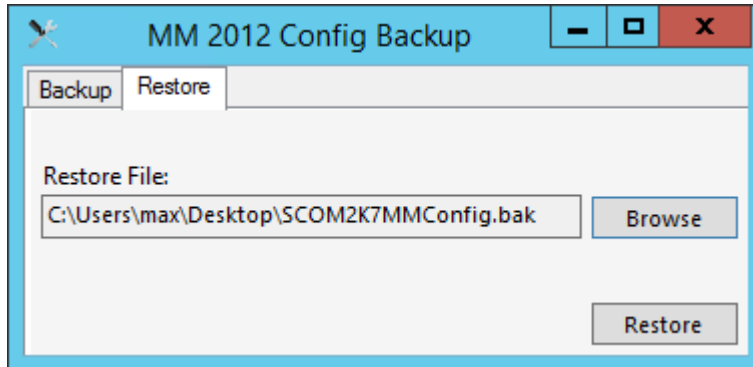


- 4.) Click **Backup**
- 5.) You should get a message telling you

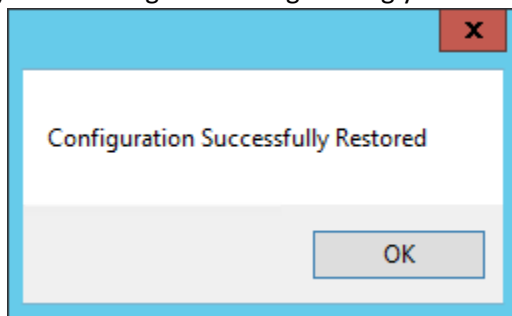


- 6.) Click **OK** and **Close** the **MM 2012 Config Backup** tool

- 7.) Right click on **SCOM 2012 Maintenance Mode Scheduler.msi** and choose **Run as Administrator**
 - a. **Note:** In some environments Run as Administrator may not show up. In this case just click Install
- 8.) Click **Next**
- 9.) **Read** and **Accept** the License Agreement, then click **Next**
- 10.) On the **Ready to Install** screen click **Install**
- 11.) Click **Finish**
- 12.) Right click on **MMConfigBackup.exe** again and choose **Run as Administrator**
- 13.) Select the **Restore Tab** and click **Browse**
- 14.) **Select your backup file** you created earlier.



- 15.) Click **Restore**
- 16.) You should get a message telling you



- 17.) Click OK
- 18.) Input your license key. Go to <http://yourServer/MMWeb/Admin.aspx>
- 19.) In the Licensing Section. Type in your license key

Licensing

License Key :

- 20.) Click **Activate**
- 21.) Launch the Web Console <http://yourServer/MMWeb>



http://xom01/MMWeb/



xom01



SCOM 2012

Maintenance Mode Scheduler

Computers

Group

Class

Subscription

Manage

One Click MM

Computers:

Select Computers For Maintenance Mode

Start Time:

10/18/2014 03:48 PM

End Time:

10/18/2014 04:18 PM

Frequency:

Once



Category:

Other (Planned)



Comment:

Cancel

Schedule